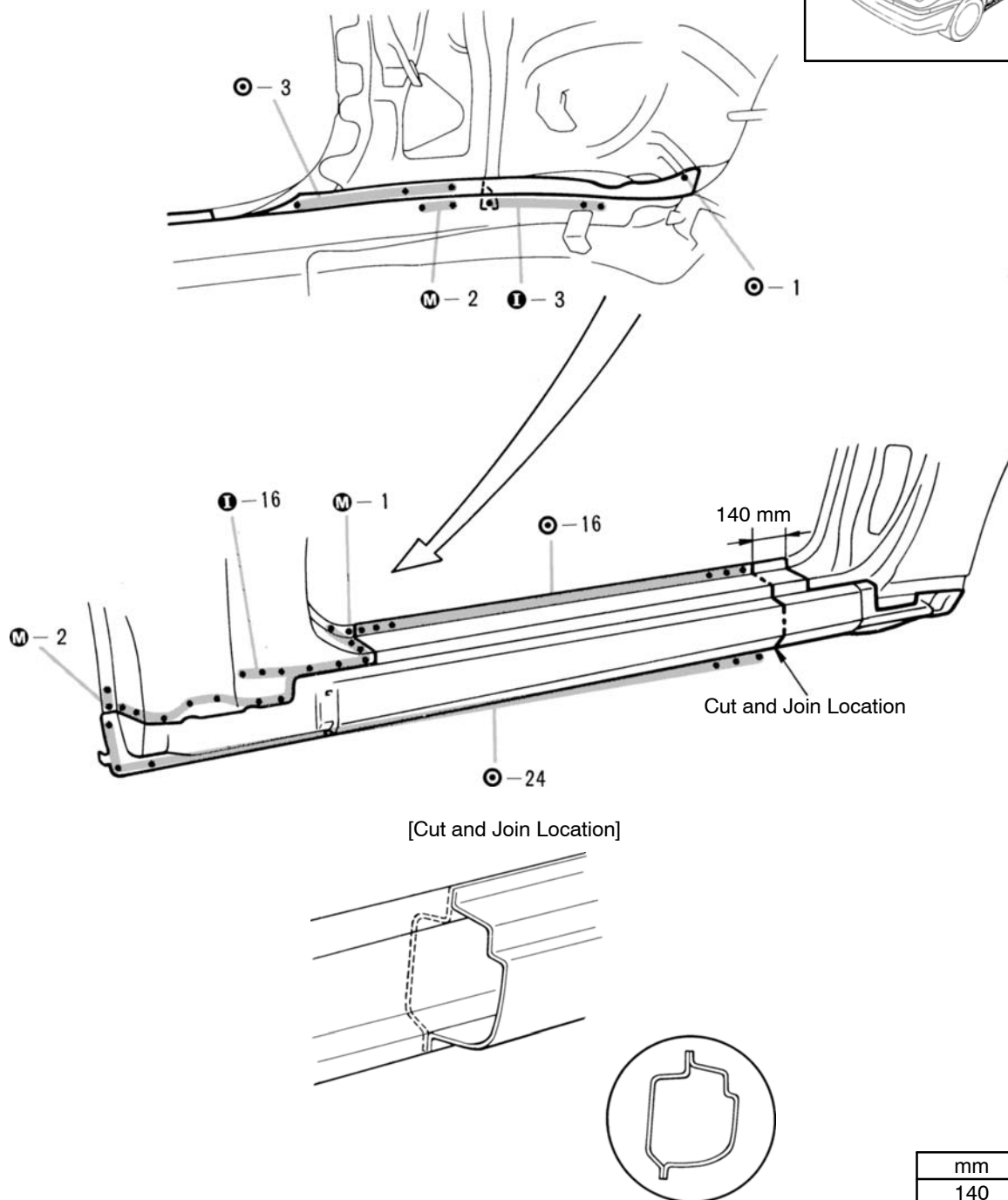
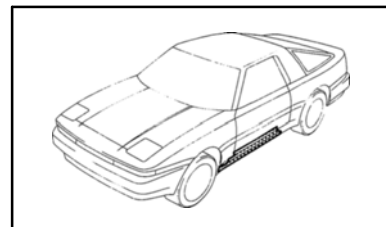


OUTER ROCKER PANEL (CUT)

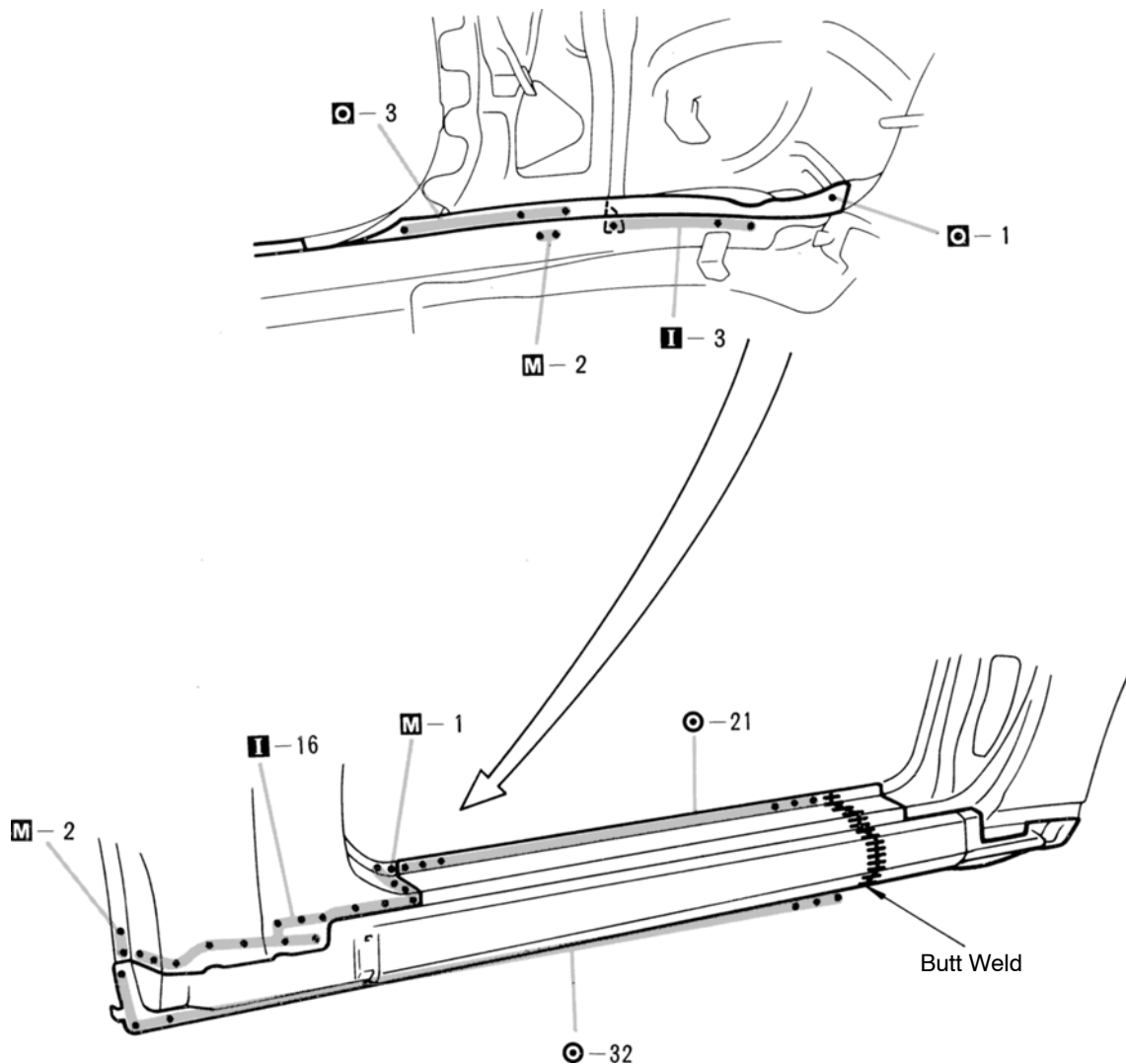
REMOVAL



mm	in.
140	5.51

1. Cut and join the outer panel at the area as show above.

INSTALLATION



1. Temporarily install the new panel and check the fit for the front door and front fender.
2. There will be less warp if the cut edge (30 – 40 mm or 1.18 – 1.57 in.) is adhered to the matching part before welding.

NOTE: Scrape off the film on the cut edge and apply weld-through primer to adhere the matching part.